



*“Book your  
Staycreation”*



Blackadders

many thanks to our sponsors



Scottish Forestry / Coilltearachd na h-Alba



# dinner timeline

Call to Awards -

MC Rodger Brunton

Ian Muir - DIA President

Awards Ceremony - Part 1

Meal served

Awards Ceremony - Part 2

Speaker - Sheriff Lindsay Wood

Rodger Brunton -

DIA Vice-President



# menu

Balsamic Roast Veg Tart Goats Cheese Crumble

Smoked Haddock, Leek and Potato Soup

Roast Leg of Lamb, Skirlie Stuffing, Yorkshire  
Pudding, Redcurrant and Rosemary Gravy

OR

Mushroom and Herb Ravioli Rockette and  
Parmesan Salad

Vanilla Cheesecake and Cranachan Crumble  
Raspberry Ripple Ice Cream

Coffee and Tablet

# list of awards

- 1 Sustainability Award** - Sponsored by Alpha Projects
- 2 Best on the Drawing Board Award** - Sponsored by Hardies
- 3 Best Use of Timber Award** - Sponsored by Wood for Good/Scottish Forestry
- 4 Best Interior Design Award** - Sponsored by Bentleys Shopfitting Ltd
- 5 Best Group Housing Award** - Sponsored by Millard Consulting
- 6 Best Use of Stone Award** - Sponsored by Denfind Stone Ltd
- 7 Best Commercial/Non-Domestic Award** - Sponsored by Marley - Plumbing & Drainage Solutions
- 8 Best Small Project - Domestic Award** - Sponsored by Andrew Shepherd Construction
- 9 Best Small Project - Non-Domestic Award** - Gowrie Contracts Ltd
- 10 Ambassador Award** - Sponsored by Karndean
- 11 Best Rehab/Regeneration Award** - Sponsored by CUPA Pizarras
- 12 Best New House Award** - Sponsored by Pert Bruce Construction
- 13 Supreme Award** - Sponsored by Blackadders

# The Architecture of Human Needs

Explore the important role of the built environment  
in the climate emergency – **RIAS Inspiring Futures**

[www.riasinspiringfutures.com](http://www.riasinspiringfutures.com)

Photography © Richard Hunter.



## **Poetry expresses human needs. Architecture gives them shelter.**

Both arts require design and engineering.

In 2005 I attended the Gleneagles G8 Summit of World Leaders where the USA for the first time conceded that global climate change might be related to human activity.

Now good people from many nations are drawing up plans to tackle climate change.

During detailed political negotiation, it is easy to lose sight of the global picture. This presentation is intended to focus practical action.

All species have the same needs:

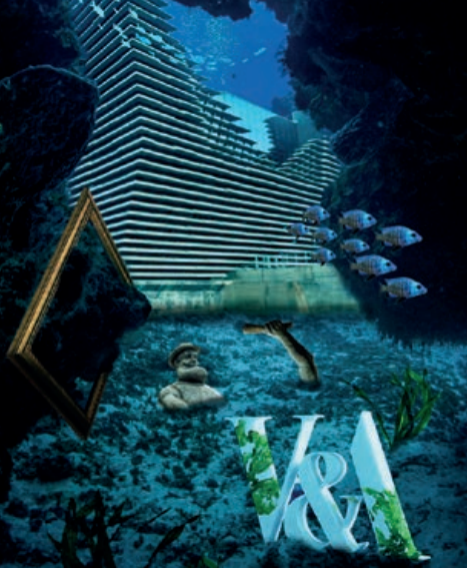
- 1. To Recognise Danger.**
- 2. Freedom to Learn.**
- 3. Energy Sources.**
- 4. Mating and Breeding.**
- 5. Nutrition.**
- 6. Clean Water.**
- 7. Sustainability.**

The poems are set mainly in Scotland, but the needs are universal. We begin in Dundee, with an iconic new building, the V&A, and what will become of it if we fail to address global climate change. We end at the 'Floating Gate', a UNESCO World Heritage site in Japan, a calm symbol of wisdom and strength for the way forward.

Robin Bell

Robin Bell's international work has addressed global historical and environmental tasks for over fifty years, including Drawing the Tay, his exhibition commissioned for the Gleneagles G8 Summit of World Leaders.

Digital Illustrations © Muir Walker Pride.



## **Dundee 2121.**

Rainforests burn.  
The icecaps melt away.  
Dundonians mourn  
the ruined V&A.

The water has reclaimed the land.  
Fish swim where artworks used to stand.

Scholars will ask,  
thinking of me and you,  
“With such an obvious task,  
what did they do?”

### **The Need to Recognise Danger**

The V&A is an outstanding example of cultural co-operation and a focus for the regeneration of the historic Scottish city of Dundee. The Tay, with the largest volume flow of any British river, has awesome power to channel the destruction caused by global warming.



### The Need for Freedom to Learn

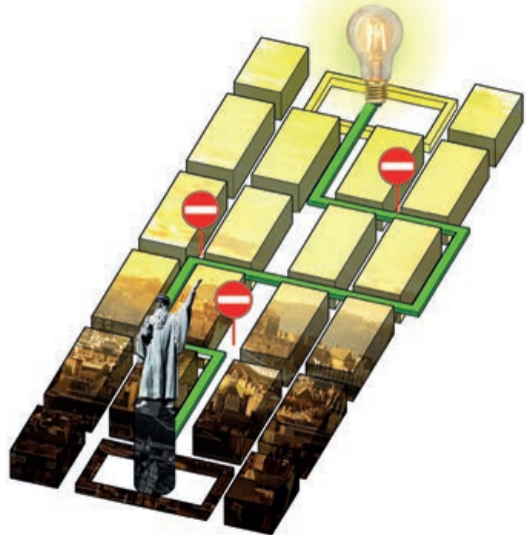
John Knox was a leader in the civil war of beliefs that hindered most Scottish architecture for two hundred years. It ended in 1746 at Culloden, the last battle fought on British soil. Only six years later, the plan for the New Town of Edinburgh was published. It became the model for Enlightenment architecture throughout the world. Statues do not necessarily teach what their funders intended.

## Edinburgh.

With his bronze frown, warrior John Knox glares towards the peace-built squares of the New Town.

Our Scottish taste for strictures cast this icon of the iconoclast.

Step from the dark.  
Teach youth how to create  
a generous debate.  
Wisdom takes work.





## Aberdeen.

First it was whales,  
for their industrial use,  
then subsea shales,  
for just the same excuse.

Economists do not dispute  
that looting schemes run out of loot.

The power-filled north winds blow.  
The turbines spin.  
The screens of research glow.  
Endgames begin.

### **The Need for Energy Sources**

Aberdeen embodies the historical evolution of energy derived from the sea: from whale oil and North Sea Oil to offshore wind. It is now a hub of new structures for environmental, agricultural, medical and many other forms of research.

### The Need to Mate and Breed

There is a growing disconnect between house-building and affordable rents and mortgages. This causes population shifts, reduced birth rates and increased burdens on the elderly.

In some areas there is hope. The future judges us by what we build.

## Stirling.

The sex is good.  
They want kids of their own.  
Sunset sinks mood.  
They can't afford a home.

Too responsible to breed  
for fear of extra mouths to feed.

Dusk lights the ridge  
like old burdens burning.  
At Stirling Bridge,  
the strong tide is turning.





## Inverness.

Coach-loads of tourists browse  
Scotland the twee,  
hairy orange plastic cows,  
kitsch jewellery,

within Victorian façades, douce,  
refurbished for another use,

while golden Highland fields,  
barley and oats,  
glow with sustaining yields  
for hungry throats.

### The Need for Nutrition

Tourism thrives on imported cartoon versions of a nation. Alongside it in Inverness, sturdy old buildings are repurposed for new services and high quality hospitality. There is a successful investment in structures for crop based industries. Technically-minded readers may notice that this poem is written in a single sentence, flowing from one extreme to the other, like many human enterprises.

### The Need for Clean Water

The Clyde was once a byword for innovative, reliable heavy engineering. Its tragic decline in the late Twentieth Century was painful to all who love the city. In recent years, the banks of the Clyde and the quality of its water have been transformed. This made it a fitting location for the United Nations COP 26 to debate global climate change with realism and generous spirit.

## Glasgow.

Data-drowned schemes  
lie inert in the cloud  
with burned-out dreams  
which used to make us proud.

Policies can never budge  
when stuck in raw, untreated sludge.

Let the cleansed Clyde  
inspire new ways to think.  
Give kids real pride  
and water fit to drink.





## Outwith.

An architect  
sits underneath a tree.  
The practiced eyes inspect  
its canopy.

Like a coral reef, the brain  
senses what we must sustain.

A slater drills  
his home in the same tree  
and asks, "Have you the skills  
to last like me?"

### **The Need for Sustainability**

Geophysical climate change involves the political and moral climates of all species, from little insects to great architects like Le Corbusier the forceful champion of modernism.

Woodlice are a much older species than humans. In Scotland, they are called slaters. Their architecture shows a better symbiotic understanding of natural resources.

Humility is a robust building material.

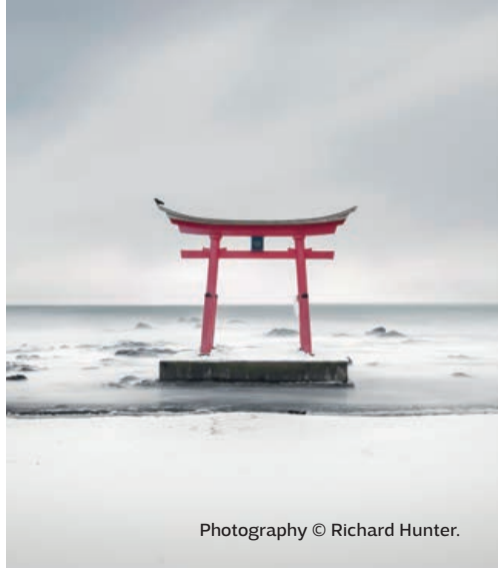
The tranquil strength of the 'floating gate' at the Itsukushima Shrine in Hokkaido encourages us forward with generosity of spirit.

This presentation is published in the year of the Tokyo Olympics, a great international success in overcoming the scientific and logistical challenges of the COVID 19 pandemic.

Can the same nations, who competed against each other, now form a united team to win the race against climate change?

The whole world is watching.

**Robin Bell**



Photography © Richard Hunter.

A wide-angle photograph of a waterfront promenade. In the foreground, a dark grey paved walkway leads towards a wooden building with a thatched roof. To the left, a person is walking along the water's edge. In the background, a large wooden building with a unique, angular design is visible. The sky is blue with scattered clouds. The text "TAKE A SEAT HAVE A THOUGHT" is overlaid in the bottom left corner.

**TAKE A SEAT  
HAVE A THOUGHT**



**According to research by Climate Central, some of Scotland's central belt is predicted to be submerged by sea water come 2050.**

Fife's coastal communities will be impacted by rising waters.

The upper Forth River will breach its banks and areas within Stirling, Grangemouth, Kincardine and Bo'ness will be covered by advancing waters.

HMY Britannia's dock at Leith will be underwater. Glasgow Airport is also highlighted as at risk, and golfers at St Andrews will need wellies.

This seat is constructed out of locally sourced sustainable materials to provide a place to contemplate our relationship with nature and the environment.

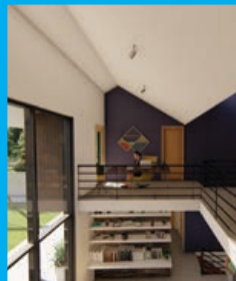
The projected lowest & highest rise in sea level by 2050 are marked on the bench.

The design incorporates ply, coppiced hazel, locally quarried ballast and is thatched in Tay reed.

This seat is one of 6 temporary structures erected across Scotland to mark COP26. Its purpose is to raise awareness of the Climate Emergency and its effect on the built environment.







## Architect

Brunton Design Studio

## Project

**Strathearn Road,  
Broughty Ferry, Dundee**

The brief was clear, and the client was adventurous enough to take a chance. From this ambition the 3 level replacement took shape. The full might of the planning department was lined up to have their boxes ticked. How long it remains “on the drawing board” remains a tantalising mystery.

**Architect**

Brunton Design Studio

**Project****Grange Lodge, Monifieth**

Our goal was to provide a design solution that enhances and respects the original Category C listed building, whilst providing the modern amenities and space the client required. Achieved through the implementation of a simple sympathetic form constructed in vertical timber cladding, creating a strong contrast between the new extension and the old listed stone building.





## Architect

Brunton Design Studio

## Project

### Hilltown Leisure Park, Dundee

The layout and content of this ambitious project would revitalise an area of Dundee which is sorely in need of it with bowling alley, gymnasium, landscaping, restaurant and crazy golf.

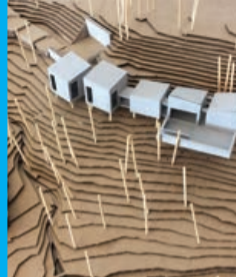
**Architect**

Voigt Architects Limited

**Project****Showcase the Street, Arbroath**

The proposal is for a Modern Community Leisure Facility at Seaton Park in Arbroath. The facility will be the first building of its kind in Scotland built using approximately 90% of recycled, reclaimed or low carbon construction materials. It is expected that the proposed Building will achieve BREEAMM Excellent rating due to the low carbon energy design and construction.





## Architect

Mary Arnold-Forster

## Project

### Tree Houses, by Dunkeld

The proposal is a series of articulated cubes separated by glazed links which breaks down the overall massing. Each cube is orientated to take advantage of the key views.

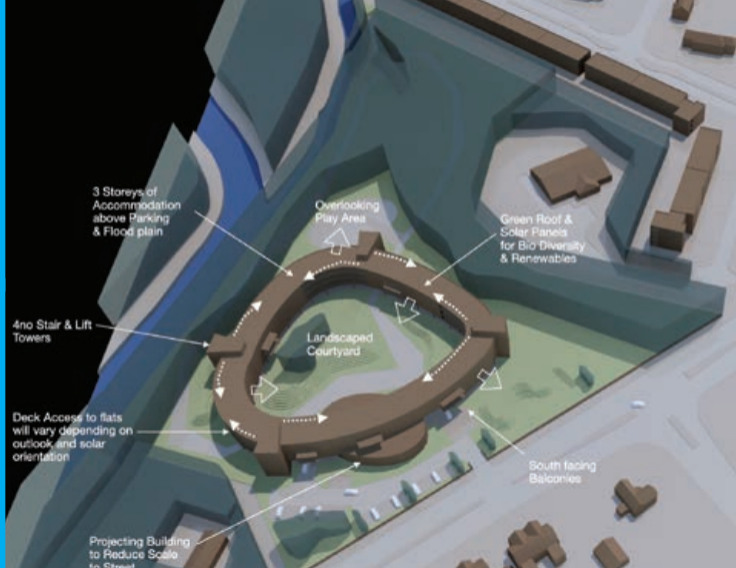
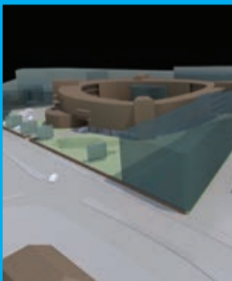
The site is a steeply sloping woodland with mostly mature birch trees. The intention is to maintain the woodland feel by retaining as many trees as possible.

**Architect**

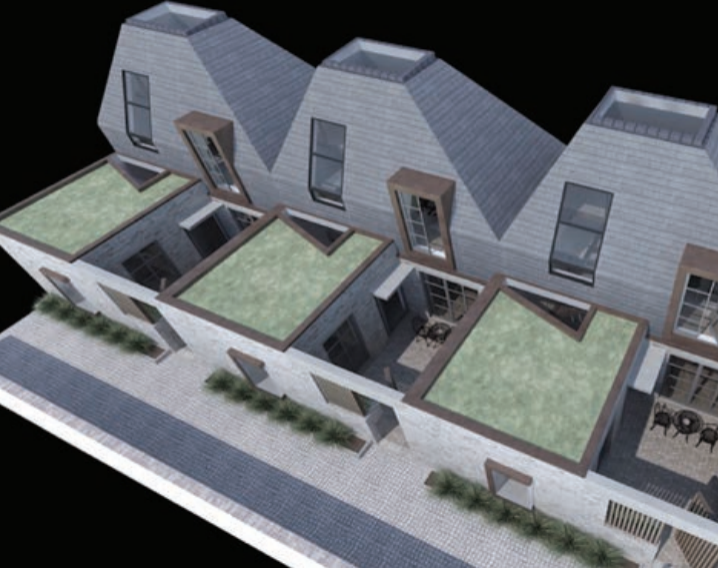
Atelier-M

**Project****Crookston Road, Glasgow**

The development proposal is for a residential development of 65 flatted dwellings within an irregular shaped continuous block of 4 storey in height that is raised on stilts with a shared communal landscaped garden within the central courtyard. This will be large enough to ensure natural light and ventilation to all dwellings. Orientation of each flat will be arranged to maximise light and to allow views of visual significance.







## Architect

Atelier-M

## Project

Queen Margaret Drive,  
Glasgow

A new build development of 4 courtyard mews dwellings within the site of former workshops.

A car free development with private and shared spaces to help create a new community.

The dwellings, over 3 levels, are designed to be flexible and adaptable to suit different styles of living.

## Architect

gary sinclair architecture

## Project

### Roman Road, Westmuir

The project developed from a family's wish to develop multi-generational living facilities within an existing house plot on a residential street within an Angus village.

The design seeks to provide grandparents with a separate, but connected living space in the most attractive part of the retained house garden with expansive views of the Strathmore Valley to the south and west.





## **Architect**

Fearn Macpherson  
Chartered Architects

## **Project**

### **SCA Grandtully Campsite**

This project provides a new education building, new overnight camping and refurbished day facility, as well as information point, bike service shelter and campervan service area. The development will equip and enhance the SCA facility and campsite for years to come.

**Architect**

ARKTX Chartered Architects

**Project****Proposed Detached Dwelling House, Prieston Hill, Tealing**

The development proposal is for a single dwelling house and associated office accommodation.

Designed to optimise stunning views yet minimise the magnitude of the development. The office, gymnasium and swimming pool wing utilise the topography and are effectively underground with a living roof wrapped over the top.





## Architect

ARKTX Chartered Architects

## Project

**Justinhaugh, by Oathlaw, Angus**

This contemporary intervention into the countryside takes advantages of the impressive views to the Angus Glens to the North.

Complete with gymnasium, lap pool and office space this large country house optimises its elevated site to maximum advantage.

**Architect**

Jon Frullani Architect

**Project****Proposed New Dwellinghouse,  
Glencoe**

The brief was to create a new dwelling replacing an existing cottage that sits within the site. The design philosophy is to capture the views available over the glens. To achieve this the design takes two lines of axis as a foundation to plan both levels of the dwelling. These two axis are very prominent upon the exterior fabric of the design.





## Architect

gary sinclair architecture

## Project

**Auchlishie Eventing,  
Auchlishie Farm, Kinnordy,  
by Kirriemuir**

Bunkhouse and event support facilities for Auchlishie Eventing on the outskirts of Kirriemuir.

The steel 'Dutch Barn' structure is partially wall clad with locally milled larch timber boarding, with solar pv mounted on the ppc steel roof.

**Architect**

Aim Design

**Project****Monifieth Community Hub**

A modest, flexible and functional community facility at the Blue Seaway waterfront which will support the community's substantial list of activity groups as well as provide much needed support resources for the existing waterfront activity groups' use and community assets.







## Architect

Collective Architecture

## Project

### The Larick Centre, Tayport

The Larick Centre houses a sports hall, several smaller halls, meeting spaces, and a café, catering for a range of uses including sports, arts, community, social events, business, and tourism. The naturally lit public spaces have been designed with flexibility in mind for a multitude of community uses. The main hall's scale makes it suitable for sport, and community events.

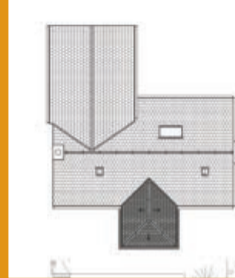
**Architect**

Studio East Architects Ltd

**Project****Single Storey Extension to  
Lynegar, Carberry Park**

A modern single storey extension to a traditional family home in the East Neuk of Fife. The scheme required extensive changes to the rear of the existing building to reorder and improve the existing kitchen space and allow for the formation of a new open plan living and dining area.





**Architect**  
Atelier-M

**Project**  
Castle Road, Longforgan

A new small entrance porch to a cottage in a conservation area for an artist. The space allows for the owner to carry out her art work or sit and look out onto the sunlit garden.

**Architect**

Fearn Macpherson Chartered Architects / Susie Whyte, Architect & Designer

**Project****Dun Aluinn Lodge, Aberfeldy**

Dun Aluinn Lodge is a former staff residence, located within the grounds of the category B listed Dun Aluinn House.

The house was brought back into use, improving the thermal fabric by wrapping the existing external walls in insulation, and cedar cladding. The internal layout was altered to provide modern open-plan living spaces overlooking the Tay valley.





## Architect

Jon Frullani Architect

## Project

### Single Storey Extension, Dundee

The brief from the clients was to form a functional adaptation of the existing house through the introduction of a large kitchen/living extension along with home office whilst creating a clear modern addition to this suburban house.

A palette of modern yet quality finishes were a high priority for this project

**Architect**

Aim Design

**Project****Dundee Science Centre - Connect**

Aim Design were commissioned to transform Dundee Science Centre into an inspiring community hub and lifelong learning resource that: welcomes people of all backgrounds and cultures; uses science engagement to bring people together; provides a lifelong source of enjoyment, inspiration and learning; and provides a unique platform to co-create and pilot new methods for delivering and evaluating science engagement.





## **Architect**

Angus Council - Housing Projects

## **Project**

### **The Abbey Quarter**

### **Housing Development**

The Abbey Quarters Housing Development is situated in central Arbroath, between Fisheracre and North Port, next to the Arbroath Abbey's Burial ground.

Silverwood Inspire timber cladding has been carefully selected for external wall finish of the houses and the apartment blocks which complements well the smooth render finish and the red sandstone used throughout the development.

**Architect**

Mary Arnold-Forster Architects

**Project****Ploughman's Cottage,  
Fungarth, Dunkeld.**

The small site sits in the middle of a hamlet with the original stone farmhouse, cottage and steading adjacent. The project was to create a south facing 'walled garden' with the new larch house to the north, a corrugated office to the east a lean to greenhouse to the west and to the south a screen beyond which the steading can be seen.







## **Architect**

Jon Frullani Architect

## **Project**

**Beach Lane, Broughty Ferry, Dundee**

This project was made a joy / pleasure to work on as we had clients that had a clear vision. The overall concept was focused on the views and the unique shape of the plan and section of this existing house. Through considered design choices an Interior language evolved that reflected our clients personalities, life and aspirations.

**Architect**

studioEAST Architects

**Project****St David's Church, Stormontfield**

The brief was to develop a 3 bedroom home within the B Listed former church. A sensitive 'light touch' approach was taken to creating a modern interior freestanding from the listed building and it's key features to maintain the historical integrity.





## **Architect**

Brunton Design Studio

## **Project**

**Refurbishment of Villa,  
Duncarse House, West End,  
Dundee**

The client's brief was simple in that they wanted the run-down ex-Jute Baron mansion to be turned into a family home but it was to have the feel and décor of a bespoke hotel.

We took the decision to preserve and repair most of the plasterwork and facings inside the house and maintain the window patterns.

**Architect**

Brunton Design Studio

**Project****Montrose Playhouse**

The Montrose community cinema is a £3 Million conversion of the old Montrose swimming pool into a 3 screen cinema, restaurant, bar and community space. The original 1960s swimming pool was iconic to Montrose and several of the key features of the pool were re-purposed and integrated into the new cinema. The design and permissions were obtained by David Paton of John Crawford Associates and Brunton Design Studio were responsible for contract administration.





## **Architect**

Aim Design

## **Project**

### **Dundee Science Centre**

Aim Design were commissioned to transform Dundee Science Centre into an inspiring community hub and lifelong learning resource that: welcomes people of all backgrounds and cultures; uses science engagement to bring people together; provides a lifelong source of enjoyment, inspiration and learning; and provides a unique platform to co-create and pilot new methods for delivering and evaluating science engagement.

**Architect**

Kerry Smith Architects

**Project****Middlebank Crescent**

This semi-detached bungalow is situated in the West End of Dundee in an established mid Century suburban area with fantastic views over the River Tay.

The First Floor rooms were extended with a large zinc dormer at the rear which has enabled a new spacious stair and additional bedroom to be added, overlooking the mature garden.





## Architect

Fife Architects / Fiona Wallace Design / Judi Simpson

## Project

### The Schoolhouse, Cupar, Fife

The Old Schoolhouse in Cuparmuir is a former school building that the Client rebuilt from a ruinous state in 1992. The project saw the creation of proposals of a pair of new rear timber extensions to the property to create a spacious and accessible master bedroom designed with principles of 'ageing in place' as a lifelong home for the family along with new dedicated utility space and reconfigured ground floor with new bright interiors.

**Architect**

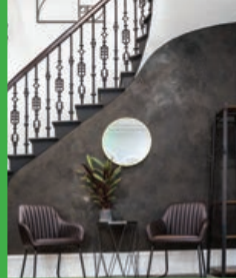
Kerry Smith Architects

**Project****Beam Orthodontics, Dundee**

A new and completely different approach to the interiors was embraced on the Ground Floor, with bespoke vertical dark wood panelling on the walls and Crittall style glazed panels filtering light through the spaces. The new areas have a dark and luxurious atmosphere quite at odds with what one would expect in a dental practice, and creating an oasis of calm in the middle of the city.







## Architect

Jon Frullani Architect

## Project

### New Office, Perth Road, Dundee

As a category B listed building we wanted to keep as much of the original features of the building as possible, the new timber windows have all been bespoke made by a local window manufacturer to suit the requirements of Historic Environment Scotland. The balustrade of the main stair was in a state of disrepair and has been skillfully re-made to it's original condition to suit the current building standards.

## Architect

Angus Council - Housing Projects

## Project

### The Abbey Quarters Housing Development, Arbroath

As part of Angus Council's Affordable Housing Supply Programme, the site accommodates a mix of 40 spacious energy efficient houses and apartments ranging from one to four bedrooms. It includes three recreational areas with planters and seating zones for the residents and general public, two access roads, parking and pedestrian links.





## **Architect**

Angus Council Housing Projects

## **Project**

### **1-12 Old School Court, Newtyle**

Old School Court, Newtyle is a 12-unit council housing development. The unit mix was informed by both housing demand reports and considerations about increasing supply of family homes and boosting school rolls. The properties are airtight, energy efficient homes with A rating EPC's and other biodiversity features such as swale and swift boxes.

**Architect**

Voigt Architects Limited

**Project****West Newbigging Gardens,  
Arbroath.**

The development is located on a former rural Brownfield site North of Arbroath, and the project retains & converts an existing steading into 2 homes, with a further 4 large 4/5 bed new build houses in the remaining ground. All have generous gardens and spectacular views and have been arranged parallel to one another to replicate the former steading/agricultural layout of the site.





## **Architect**

Anderson Bell + Christie  
Architects

## **Project**

**Gannochy Trust Lifetime  
Neighbourhood, Perth**

This new housing neighbourhood is designed to support an intergenerational community nurturing a sense of 'ageing well' - a sociable community offering residents an empowering, accessible, inclusive and safe environment.

## Architect

Fearn Macpherson  
Chartered Architects

## Project

### Duntuim Development, Phase 3 & 4, Aberfeldy

The development comprises of a mixture of 3 and 4 bed properties, with two-storey house types and bungalows, reflecting the needs for housing in the local area. The bungalows are designed with future potential conversion of the loft space, extending their flexibility and lifespan in comparison to typical dwellings.





## Architect

Jon Frullani Architect

## Project

### 3 Executive Villas, Adelaide Place, Dundee

This challenging site with steep topography provided the opportunity for 3 executive villas to integrate themselves with the landscape. Each property is designed with split level accommodation, whilst at all times retaining a relationship with the landscape and views throughout the houses.

## Architect

Jon Frullani Architect

## Project

**The Paddocks, Saucher,  
Kinrossie, Perthshire**

When appointed to assist our client developing this greenfield site in rural Perthshire, outline consent had been obtained by the previous land owner for 4 modest single storey bungalows. Our client believed the virtues of the site merited a more adventurous and larger scale of property to celebrate the landscape in which it sits.







## **Architect**

Angus Council - Housing Projects

## **Project**

### **The Abbey Quarter Housing Development**

The designers took the decision to give the development a sense of place by using materials and shapes that relate to the surroundings. The warm pink tones of the local stone were replicated by carefully selected alternative - red sandstone from St Bees quarry in Cumbria, as the original stone from the Seaton Cliffs beach was no longer available.

**Architect**

Aim Design

**Project****Castleroy, Broughty Ferry**

The fire place and surround at Castleroy was exclusively designed with quality stone in mind.

“Caithness” stone was used for the interior in an alternate pattern layout. It was important that the stone was locally sourced and the individual elements of each stone stand out. The feature fireplace creates a strong focal point in the open plan living/dining area.





## **Architect**

Voigt Architects Limited

## **Project**

**Moir Construction,  
West Newbigging Gardens,  
Arbroath.**

The steading has been sensitively converted retaining a lot of the stonework and slate roof. A partially demolished section has been reconstructed with aluminium cladding, paying homage to the former brownfield site. This use of a traditional natural material has helped to create a stunning development.

**Architect**

Voigt Architects Limited

**Project****Letham Grange, Angus**

The project is a 'knock through' of the existing kitchen/dining spaces whilst extending to the south by approx. 3m to create an open plan kitchen/dining/living space. The existing utility room was upgraded - accessed via a 'hidden door' flush with the full height kitchen units.

Externally the extension is a simple pitched roof perpendicular to the main roof plane.





## **Architect**

CASA -

Colin Andrew Smith Architect

## **Project**

**Callelochan, Aberfeldy**

Callelochan is located high above the Southern shoreline of Loch Tay and replaces a house at the end of its life. The new house embraces its sloping topography whilst reaching out and grabbing the magnificent views of Loch Tay and the Lawers range, bringing them indoors.

**Architect**

ARKTX Chartered Architects

**Project**

**Crammond, Newbigging Road,  
Tealing**

This large country house is a companion piece and sits next to the 2014 DIA Best House Award winner.

The stonework of the entrance area leads one under a sheltered canopy into an entrance hall which looks right through the large Living/Kitchen space and panoramic glazed gable out to the fields beyond.





## **Architect**

Fearn Macpherson  
Chartered Architects

## **Project**

### **5 - 9 Bridgend, Aberfeldy**

The project included the subdivision of an existing shop to form 2 retail units, and the conversion & refurbishment of the rear premises to form 3 self-catering holiday lets. With its prominent High Street location, the renovation was vital to retain and maintain the important shop units, as well as diversify and create different income streams for the client.

## Architect

Aim Design

## Project

### Dundee Science Centre

Aim Design were commissioned to transform Dundee Science Centre into an inspiring community hub and lifelong learning resource that: welcomes people of all backgrounds and cultures; uses science engagement to bring people together; provides a lifelong source of enjoyment, inspiration and learning; and provides a unique platform to co-create and pilot new methods for delivering and evaluating science engagement.







## Architect

Collective Architecture

## Project

### The Larick Centre, Tayport

The Larick Centre houses a sports hall, several smaller halls, meeting spaces, and a café, catering for a range of uses including sports, arts, community, social events, business, and tourism. The naturally lit public spaces have been designed with flexibility in mind for a multitude of community uses. The main hall's scale makes it suitable for sport, and community events.

**Architect**

Kerry Smith Architects

**Project****Beam Orthodontics, Dundee**

A Listed Grade C building, the practice inhabited initially the First Floor areas. As the practice expanded to take in more private dental work, it decided to bring in the ground floor areas of the building. There was a desire to retain the historic features of the existing building externally, so spaces were carefully placed around existing windows.





## Architect

Aim Design

## Project

### Castleroy, Broughty Ferry

Castleroy sits in a prominent location overlooking the River Tay.

The interior alterations were designed to combine the Living / Kitchen / Dining area, whilst the external alterations opened up each space to take full advantage of the incredible views. In addition to the new layout, a brand new kitchen was installed and a stunning stone feature fireplace.

**Architect**

Brunton Design Studio

**Project****Home Renovation, Maule Street,  
Carnoustie**

The glazed extension looks out over the cleverly cantilevered patio area which maximises what could have been a compressed amenity area, but now maximises its boundary. The structural glazed panels give a contemporary look to the traditional stone and slate house mass.





## **Architect**

Brunton Design Studio

## **Project**

**House Extension, Osborne Place, Dundee**

The contemporary extension with its client requested flat roof has a new bright kitchen and dining area which is linked to a new decked outdoor eating and play space. It has refreshed the whole house by using a reorganisation strategy coupled with the abundance of natural light to give the family a fresh start to each day.

## Architect

Voigt Architects Limited

## Project

### Letham Grange, Angus

The project is a 'knock through' of the existing kitchen/dining spaces whilst extending to the south by approx. 3m to create an open plan kitchen/dining/living space. The existing utility room was upgraded – accessed via a 'hidden door' flush with the full height kitchen units.

Externally the extension is a simple pitched roof perpendicular to the main roof plane.





## Architect

Voigt Architects Limited

## Project

### House alteration & extension, Carnoustie

The brief for the project was to improve the entrance to the house and provide a better kitchen/dining space. The existing entrance was uninspiring through a back gate of the house and the former kitchen was cramped with no connection to the outside. The result is a modest but modern new entrance and house extension, that represents a huge transformation from the existing building.

## Architect

John Manning  
Chartered Architect

## Project

### Hillcrest Kirk Wynd, Blairgowrie

In 2013 I was asked to alter the house and design an extension with particular consideration of Mary having been diagnosed with Alzheimer's. In lockdown I was asked to design a garden shed as a folly all as part of the garden (and house) delights.







## Architect

studioEAST Architects

## Project

### St David's Church, Stormontfield

The brief was to develop a 3 bedroom home within the B Listed former church.

A sensitive 'light touch' approach was taken to creating a modern interior freestanding from the listed building and its key features to maintain the historical integrity.

**Architect**

studioEAST Architects

**Project**

**Single Storey Extension to  
Lynegar, Carberry Park, Leven**

A modern single storey extension to a traditional family home in the East Neuk of Fife. The scheme required extensive changes to the rear of the existing building to reorder and improve the existing kitchen space and allow for the formation of a new open plan living and dining area.





## **Architect**

Brunton Design Studio

## **Project**

### **Broughty Ferry Villa Renovation**

The brief was to extend a classic stone/slated detached villa to create a bigger lounge, outdoor entertainment area and to capture the magnificent view of the Tay Estuary from where the site is situated high above Broughty ferry by offering a panoramic east to west view.

**Architect**

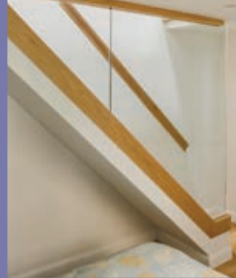
CASA -

Colin Andrew Smith Architect

**Project****Milton Cottage, Dalguise**

Two small intervention extensions were designed to transform the way the house is used. One being a replacement porch incorporating a much needed buffer entrance doubling as a sun room, with inside outside spaces. The other a new staircase which opens up the ground floor allowing the living-dining-kitchen space to become the heart of the home whilst providing an essential facility for the upstairs bedrooms.





## Architect

Fife Architects

## Project

### The Net House, Crail

The brief was to create independent private guest accommodation, within the existing footprint of the net house.

It has now been completely transformed internally, into a one bedroom tiny house for guest accommodation. All windows have been replaced with new, however the original window unit patterns and colour have been repeated.

**Architect**

Fife Architects

**Project****The Deck House, Elie, Fife**

The project saw the replacement and upgrade of this rear extension with a more sympathetic but modern glass extension to take advantage of the views towards the Firth of Forth and Elie beach.

The project featured triple glazed units, and a hybrid aluminium and Timber frame using feature FSC certified Abodo wood cladding and Velfac curtain walling.





## **Architect**

Kerry Smith Architects

## **Project**

**Middlebank Crescent, Dundee**

This semi-detached bungalow is situated in the West End of Dundee in an established mid Century suburban area with fantastic views over the River Tay.

The First Floor rooms were extended with a large zinc dormer at the rear which has enabled a new spacious stair and additional bedroom to be added, overlooking the mature garden.

**Architect**

Fife Architects

**Project****Old Schoolhouse, Cuparmuir,  
Extension and Renovation**

The project saw the creation of a pair of new rear timber extensions to the property to create a spacious and accessible master bedroom designed with principles of 'ageing in place' as a lifelong home for the family along with new dedicated utility space and reconfigured ground floor.







## **Architect**

Mary Arnold-Forster Architects

## **Project**

### **Ploughman's Cottage, Fungarth, Dunkeld.**

The small site sits in the middle of a hamlet with the original stone farmhouse, cottage and steading adjacent. The project was to create a south facing 'walled garden' with the new larch house to the north, a corrugated office to the east a lean to greenhouse to the west and to the south a screen beyond which the steading can be seen.

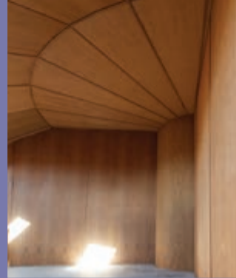
**Architect**

Jon Frullani Architect

**Project****Single Storey Extension, Dundee**

This house extension was completed in 2021 and has added a beautiful open plan space and home office to the existing house. Adapting the house to suit the family's desired way of living following outgrowing the original houses layout. The clients have an eye for detail that has come through in the final choices of finishes and fittings.





## **Architect**

ARKTX Chartered Architects

## **Project**

**Moilean, Newbigging Road,  
Tealing**

This quirky corner garden shelter was designed to compliment the 2014 DIA Best House Award winner and shares many of the features of the main house. It sits neatly within the boundary wall junction and embraces the south/westerly aspect. Its quadrant conical roof echoes the curves and fluidity of the main house roof.

**Architect**

Aim Design

**Project****Brook Street Cottage, Monifieth**

This small extension in Monifieth was designed for a domestic client seeking to make better use of their historic cottage, opening the living space to the rear terrace / garden area whilst creating light and space internally.

The simple palette of modern materials allows the heavy stone and slate of the existing house to breathe, whilst lightening the interior dramatically.





## **Architect**

Wellwood Leslie  
Chartered Architects

## **Project**

**National Trust for Scotland,  
House of Dun, Montrose**

Wellwood Leslie have completed a refurbishment of the House of Dun in Montrose on behalf of the National Trust for Scotland. Wellwood Leslie led a full design team, including interpretation and exhibition consultants to form a new visitor attraction complimenting the existing house.

## Architect

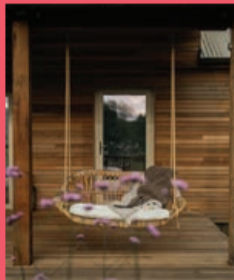
studioEAST Architects

## Project

### Tickled Trout Cafe, Almondbank

College Mill is a former beetling mill on the banks of the River Almond associated with an existing trout farming business. An opportunity was taken to develop the building to create a unique cafe and community space. The works included a complete renovation of the exterior and interior, new kitchen/WC facilities and formation of feature bridges over the lade which runs through the building to serve the fish farm.





## Architect

Fearn Macpherson Chartered Architects / Susie Whyte, Architect & Designer

## Project

### Dun Aluinn Lodge, Aberfeldy

Dun Aluinn Lodge is a former staff residence, located within the grounds of the category B listed Dun Aluinn House.

The house was brought back into use, improving the thermal fabric by wrapping the existing external walls in insulation, and cedar cladding. The internal layout was altered to provide modern open-plan living spaces overlooking the Tay valley.

## Architect

Jon Frullani Architect

## Project

### New Office, Perth Road, Dundee

As a category B listed building we wanted to keep as much of the original features of the building as possible, the new timber windows have all been bespoke made by a local window manufacturer to suit the requirements of Historic Environment Scotland. The balustrade of the main stair was in a state of disrepair and has been skillfully re-made to it's original condition to suit the current building standards.







## **Architect**

Fearn Macpherson  
Chartered Architects

## **Project**

### **5 - 9 Bridgend, Aberfeldy**

The project included the subdivision of an existing shop to form 2 retail units, and the conversion & refurbishment of the rear premises to form 3 self-catering holiday lets. With its prominent High Street location, the renovation was vital to retain and maintain the important shop units, as well as diversify and create different income streams for the client.

**Architect**

Wellwood Leslie  
Chartered Architects

**Project****Glasgow Golf Club, Killermont  
Bearsden, Glasgow**

Following a catastrophic fire in September, 2018 which destroyed the existing Killermont House, Clubhouse for Glasgow Golf Club, Wellwood Leslie were appointed as a key member of the design team selected to develop a strategy to reinstate the existing building in a manner appropriate for the 21st century.





## **Architect**

Jon Frullani Architect

## **Project**

### **Conversion of Masonic Lodge, Aberdeen**

Dating from 1904, this property is a Category C listed building which was respectfully converted to 4 luxury apartments, each with their own unique distinguishable feature. The fabric of the building was retained and respected, with particular focus on the existing crypt. The crypt was incorporated into one of the apartments as a key feature and key space for the resident to utilise and enjoy.

**Architect**

Trail Architects

**Project****Linton Hotel and Self Catering Accommodation**

This Hotel and Self-Catering development is located within the Yorkshire Dales National Park. The project proposes contemporary solutions, that respond to the character of the area in a considered and sympathetic way. The project was awarded a Scottish Design Award in July 2021.





## **Architect**

Wellwood Leslie  
Chartered Architects

## **Project**

**Ashurst Offices, Central Building,  
Waterloo Street, Glasgow**

The new home for Ashurst consists of 3 floors, in which the middle floor is the connecting element between the floors. It allows cross pollination between the building and the teams. Its the heart of the operation, where all comes together. Within this floor there is something for everyone, depending on your mood, task at hand or team size.

**Architect**

Trail Architects

**Project****Joe Yates Court, Dingwall**

The project delivers 6x 1 bed social housing units and seeks to introduce active pedestrian travel and surveillance to improve security and engagement within this area of Dingwall. The project has received widespread positive public reaction and press coverage. The development has been named after the late Joe Yates, who was a well-known member of the Dingwall community.





## Architect

studioEAST Architects

## Project

### St David's Church, Stormontfield

The brief was to develop a 3 bedroom home within the B Listed former church.

A sensitive 'light touch' approach was taken to creating a modern interior freestanding from the listed building and its key features to maintain the historical integrity.

## Architect

CASA -  
Colin Andrew Smith Architect

## Project

Bykenhillock, Glen Prossen,  
by Kirriemuir

The works involved stripping back these buildings removing poorly constructed extensions and refurbishing the stone buildings of merit.

Three extensions were added connecting the buildings to form a dwelling and grandparent annex via a series of split levels.







## **Architect**

Brunton Design Studio

## **Project**

### **Duncarse House, Perth Road**

The client's brief was simple in that they wanted the run down ex-Jute Baron's mansion to be turned into a family home but it was to have the feel and décor of a bespoke hotel. We took the decision to preserve and repair most of the plasterwork and facings inside the house and maintain the window patterns especially the orangery entrance. The clients own access to ideas and equipment worked alongside the detailing and feature pieces of joinery work we incorporated.

## Architect

Voigt Architects Limited

## Project

### Moir Construction, Arbroath

The development is located on a former rural Brownfield site North of Arbroath, and the project retains & converts an existing steading.

The original steading is a C shape in plan and is split into two halves which are visibly different, which allowed for 2 separate dwellings.





## **Architect**

Mary Arnold-Forster Architects

## **Project**

**Ardargie Mains Farm,  
Forgandenny, Perthshire**

The project was to restore and extend the house. The main aim was to connect the kitchen extension with the landscape which we did by dropping the level with long shallow concrete steps. The cedar clad kitchen / dining/sitting room leads directly out onto a terrace on the east. We also returned the main entrance to the front of the house with a large utility entrance to the rear.

**Architect**

Collective Architecture

**Project****The Larick Centre, Tayport**

The Larick Centre houses a sports hall, several smaller halls, meeting spaces, and a café, catering for a range of uses including sports, arts, community, social events, business, and tourism. The naturally lit public spaces have been designed with flexibility in mind for a multitude of community uses. The main hall's scale makes it suitable for sport, and community events.





## Architect

Lorn Macneal Architects

## Project

### Extension to C-Listed Georgian Townhouse, St Andrews

We have created a unique, bold and contemporary extension that complements the existing house whilst being unashamedly modern. The existing house has been carefully and meticulously restored with original doors, fireplaces, skirting, cornices and architraves carefully reinstated. The existing house has been fully insulated and modernised to ensure its longevity.

## Architect

studioEAST Architects

## Project

### Tickled Trout Cafe, Almondbank

College Mill is a former beetling mill on the banks of the River Almond associated with an existing trout farming business. An opportunity was taken to develop the building to create a unique cafe and community space. The works included a complete renovation of the exterior and interior, new kitchen/WC facilities and formation of feature bridges over the lade which runs through the building to serve the fish farm.





## **Architect**

Brunton Design Studio

## **Project**

### **Montrose Playhouse**

The Montrose community cinema is a £3 Million conversion of the old Montrose swimming pool into a 3 screen cinema, restaurant, bar and community space. The original 1960s swimming pool was iconic to Montrose and several of the key features of the pool were re-purposed and integrated into the new cinema. The design and permissions were obtained by David Paton of John Crawford Associates and Brunton Design Studio were responsible for contract administration.

**Architect**

Fearn Macpherson  
Chartered Architects

**Project****Tatha View, Kenmore**

This project saw a complete retrofit and extension of a split-level house to form en-suites, master bedroom & bathroom upstairs. Downstairs, a double-sided fireplace separates the large open-plan kitchen / living / dining area and new snug, all opening out onto the new full-width verandah overlooking Loch Tay.







## Architect

Fearn Macpherson Chartered Architects / Susie Whyte, Architect & Designer

## Project

### Dun Aluinn Lodge, Aberfeldy

Dun Aluinn Lodge is a former staff residence, located within the grounds of the category B listed Dun Aluinn House.

The house was brought back into use, improving the thermal fabric by wrapping the existing external walls in insulation, and cedar cladding. The internal layout was altered to provide modern open-plan living spaces overlooking the Tay valley.

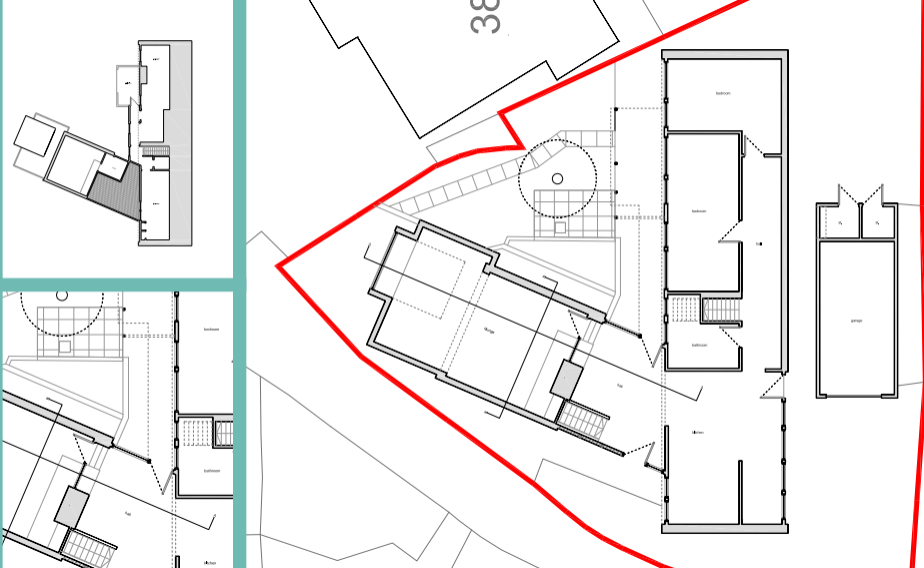
**Architect**

Jon Frullani Architect

**Project****Beach Lane, Broughty Ferry**

A complete refurbishment of this existing house, to create additional usable space and to bring it into the 21st century. We stripped the house back to its original walls and in some cases demolished elements to rebuild them.

With this bare shell we were able to transform a tired house into a contemporary, modern family home.





## **Architect**

Fearn Macpherson  
Chartered Architects

## **Project**

### **Garth Wood House, Aberfeldy**

Garth Wood House is located overlooking the confluence of the Rivers Lyon and Tay, in Highland Perthshire. The pavilion style house has been designed with the living quarters to the upper storey, including the master bedroom, dressing room and study together with a large covered balcony to two sides, maximizing the site's outstanding views.

**Architect**

Jon Frullani Architect

**Project****Charleston Farm, Errol**

The concept for this design was to take a modern slant on the traditional form and colour of a two storey rural farmhouse in Perth and Kinross, with two subservient wings that mimicked agricultural outbuildings. The contrast between the sharp render and warm timber is punctuated at the entrance by local stone and through the clever use of clearstory glazing the family room roof appears to float.





## Architect

ARKTX Chartered Architects

## Project

**Crammond, Newbigging Road,  
Tealing**

This large country house is a companion piece and sits next to the 2014 DIA Best House Award winner.

The stonework of the entrance area leads one under a sheltered canopy into an entrance hall which looks right through the large Living/Kitchen space and panoramic glazed gable out to the fields beyond.

**Architect**

Ewan Cameron Architects

**Project****Bruadar, Milnathort, Kinross**

This house was designed with passive house principles in mind and incorporates key aspects of this approach to low energy, fabric-first house design.

The beautiful Kinross-shire site is on a south facing slope which is ideally suited to this type of design. The building works on the “hide and reveal principle”, creating suspense.





## Architect

Voigt Architects Limited

## Project

Usanview, Usan, Montrose

The design takes the form of 2 blocks each part of which is aligned with the triangular shaped site boundary forming 2 distinct wings: the bedroom wing at the front/road side; and the living wing at the rear.

The result is a modern family home of 2 halves: living and sleeping; where the space in between is as important as the 2 wings of the house.

**Architect**

Voigt Architects Limited

**Project****Barns Of Craig Montrose, Angus**

The house is a 1.5 storey new build with 4 bedrooms, and large open plan areas at ground floor which open onto a covered external patio space giving access to large private gardens. Upstairs there is a large open sitting area overlooking the downstairs garden room via a glass balcony, with views to the countryside via carefully positioned rooflights.







## **Architect**

CASA -

Colin Andrew Smith Architect

## **Project**

**Callelochan, Aberfeldy**

Callelochan is located high above the Southern shoreline of Loch Tay and replaces a house at the end of its life. The new house embraces its sloping topography whilst reaching out and grabbing the magnificent views of Loch Tay and the Lawers range, bringing them indoors.

**Architect**

Fife Architects

**Project****Walker House, Colinsburgh**

The new build house was designed as a new energy-efficient family home sited in a vacant lot within the Colinsburgh Conservation Area.

The new simply designed house marries current styles of architecture with traditional building techniques and evokes a style that aims for continuity of the character of the Conservation while introducing an energy-efficient environmentally friendly modern house to the site.





Blackadders

many thanks to our sponsors



Scottish Forestry / Coilltearachd na h-Alba





Follow the DIA:

[www.dia-architects.com](http://www.dia-architects.com)

 [facebook.com/DIAdundee](https://facebook.com/DIAdundee)

 [@DIAdundee](https://twitter.com/DIAdundee)



Scottish Forestry / Coilltearachd na h-Alba



Millard  
More than civil engineers



Hardies



PERTBRUCE  
CONSTRUCTION



CUPA PIZARRAS  
The world leader in natural stone



Karndean



Blackadders